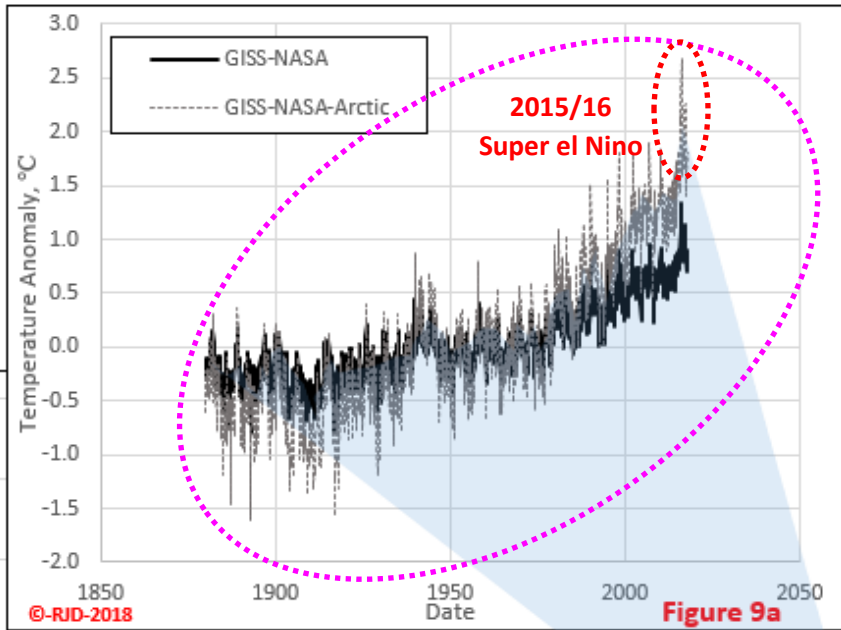


OPS-4

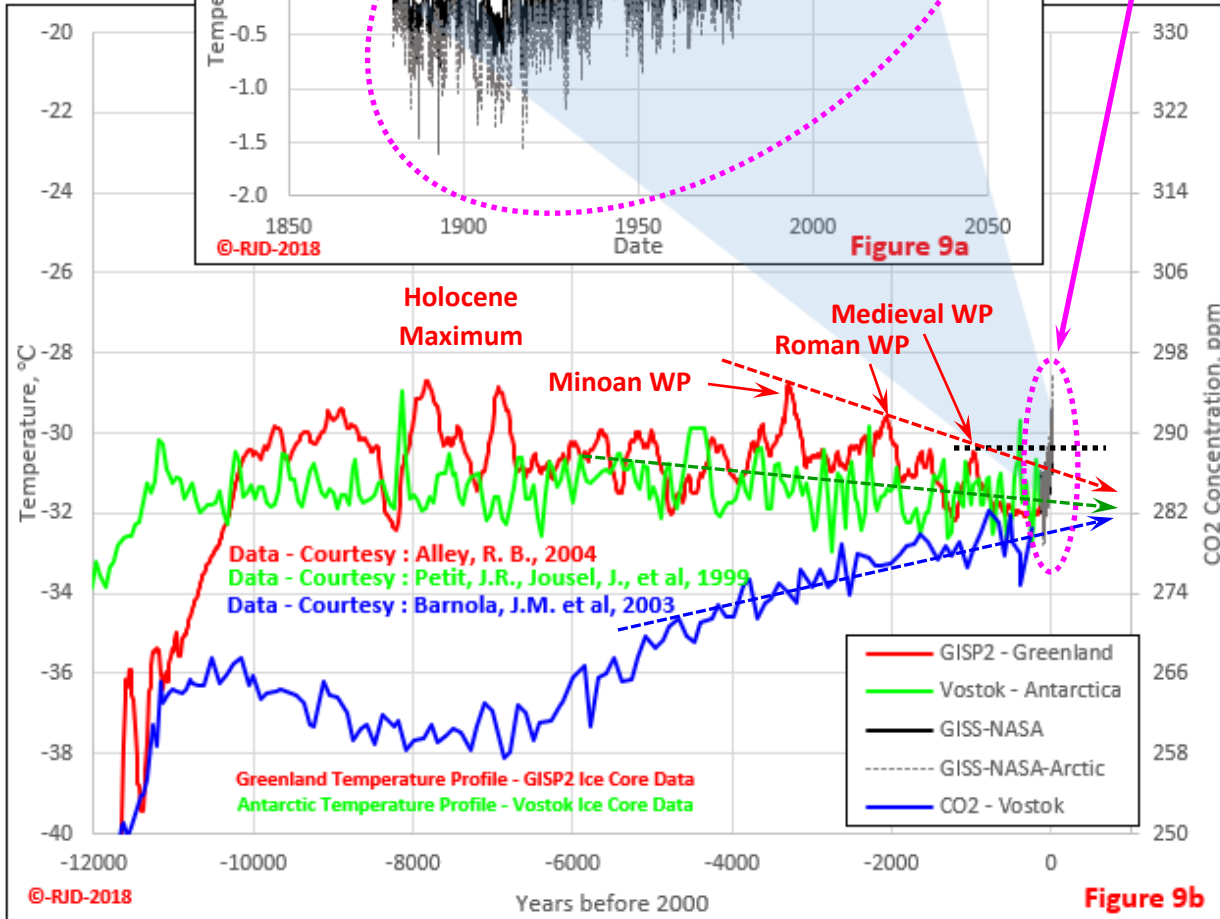
A Little Perspective on “Climate Change”

Strange how temperatures in Greenland (**Red Dashed Line**) and Antarctic (**Green Dashed Line**) have continually dropped for 6,000+ years as CO₂ (**Blue Dashed Line**) steadily increased. Hmmm...



The official NASA-GISS (GISS) global data set was multiplied by a factor of two to represent an equivalent temperature change in Greenland and then superimposed on the Greenland GISP and Antarctic Vostok ice core data.

NOT VERY SCARY!! Even when using the exaggerated GISS Data! Well within normal temperature fluctuations!



This is what 20th and early 21st Century “Climate Change” looks like when compared to the historical temperature records. And that is using the GISS temperature anomaly data set (one of the most manipulated (i.e.: homogenized) and therefore with the most exaggerated warming). Given that the Vikings were farming in Greenland during the Medieval Warm Period (MWP), the elevated temperatures put forward by GISS appear to be overstated. Try farming in Greenland right now!! The 2015 super el Nino accounts for over 1/3 of the GISS temperature spike (roughly 1 °C that can be ignored in a climate discussion). That puts the GISS temperature estimate for Greenland just above the MWP. HadCrut4 and the satellite temperature data sets are lower than GISS and therefore closer to reality.

More info/data
Google Ronald Davison Climate